

Michigan Motorcyclist Crash and Fatality Data and Charts

August, 2020



Table of Contents

Introduction	3
Michigan Motorcyclist Fatalities 1992- 2019	4
Michigan Motorcyclist Fatalities per Year 2007 – 2019.....	5
Michigan Motorcyclist Average Fatalities per Year Prior to Compared to Post Helmet Law Change	6
Michigan Total Motorcyclist Crashes per Year 2007-2019.....	7
Michigan Motorcycle Registrations per Year 2007 – 2019.....	8
Michigan Motorcyclist Fatality Rate per 100,000 Motorcycle Registrations.....	9
Average Motorcyclist Fatality Rate per 100,000 registrations Prior to and Post Helmet Law Change.....	10
Michigan Population 2007-2019.....	11
Michigan Motorcyclist Fatality Rate per Million Population.....	12
Average Motorcyclist Fatality Rate per Million Population Prior to & Post Helmet Law Change.....	13
Michigan Motorcyclist Helmet Use: Fatal Crashes 2008 – 2019.....	14
Michigan Crash/fatality ratio.....	15
Michigan Crash/fatality ratio Prior to and Post Helmet Law Change.....	16
Over-under Representation in Fatalities Compared to Percent of Riders in the Crash Population - Helmet vs. No Helmet.....	17
Death Rate per 100 Crashes – Helmet vs No Helmet 2012 – 2019.....	18
The National Motorcycle Institute Fatality Reporting System.....	19

INTRODUCTION

The charts included in this document were developed by the Skilled Motorcyclist Association – Responsible, Trained and Educated Riders, Inc. (SMARTER) at www.smarter-usa.org. Please contact us at smarterusa@gmail.com with any questions. SMARTER began collecting this data in 2007, the year the association was incorporated.

The source for motorcyclist crash and fatality data represented in these charts is the Michigan Traffic Crash Reporting System annual report titled Motorcycle Helmet Traffic Crash Statistics. This report is available from the Michigan State Police Traffic Crash Reporting Unit at 517-241-1699 or by contacting SMARTER. A preliminary report is often published in December of each year after it is assumed the riding season has concluded and the final is usually published in mid-April of the following year. The data used in these charts is from the final reports.

Motorcycle registration data is from the Michigan Department of State and is collected in early to mid-August of each year. Census data as publically reported is used for population.

Fatality rate per registration, fatality rate per million population and crash/fatality ratio are calculated statistics based on the raw number reported by the sources. Increases or decreases reported are calculated statistics.

Chart # 1
Michigan Motorcyclist Fatalities 1992- 2019

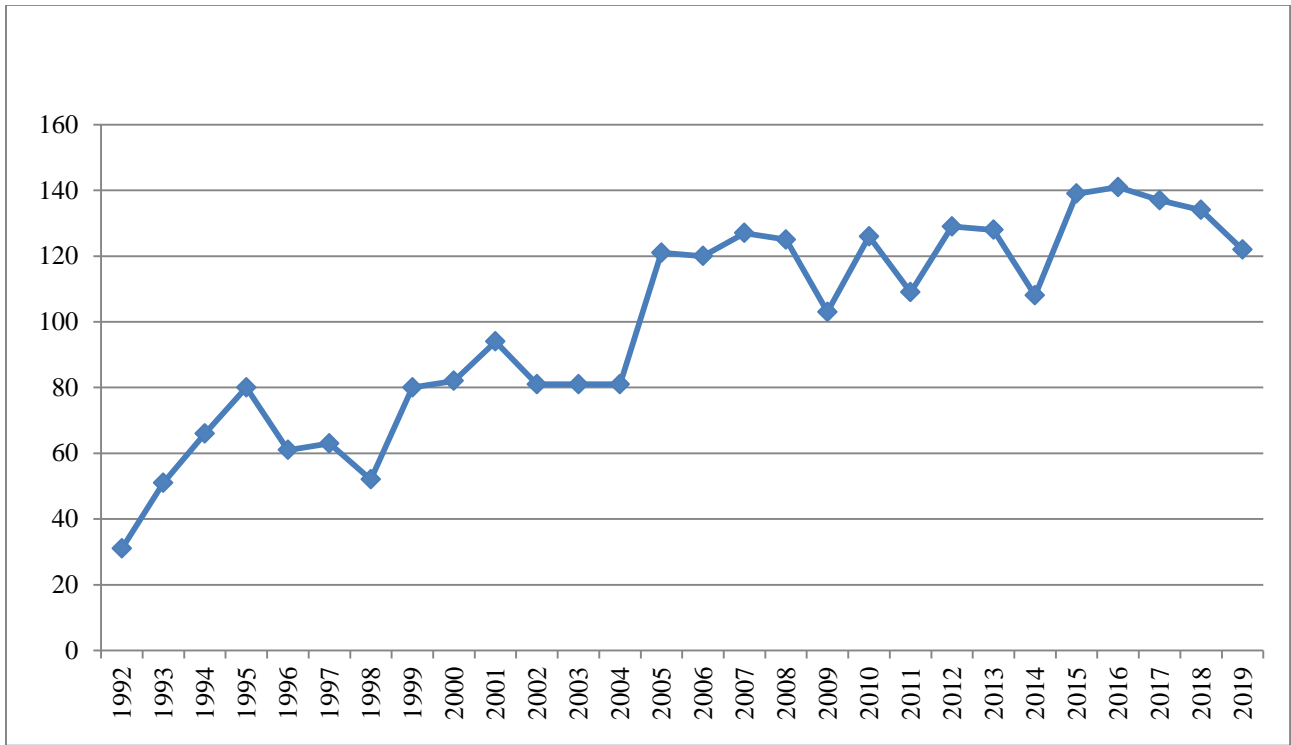


Chart # 1 displays the number of Michigan motorcyclist fatalities for years 1992 through 2019. Low was 31 fatalities in 1992 - high was 141 fatalities in 2016.

Collection of motorcyclist fatality data began in 1952 - there were 29 fatalities reported that year. Triple digit fatalities (104) was first recorded in 1966 and the highest fatality number of 209 was reported in 1973.

Following the 1973 high, fatality numbers gradually decreased returning to double digits of 84 in 1988 and remaining double digits until 122 fatalities were recorded in 2005. Between 2004 and 2011 fatality numbers varied year to year but averaged about 114 per year until 2012 when the average fatalities per year rose to 130 through 2019 (see charts # 2 & 3)

The data shows a steady increase in fatalities for nearly three decades.

Chart # 2
Michigan Motorcyclist Fatalities per Year 2007 – 2019

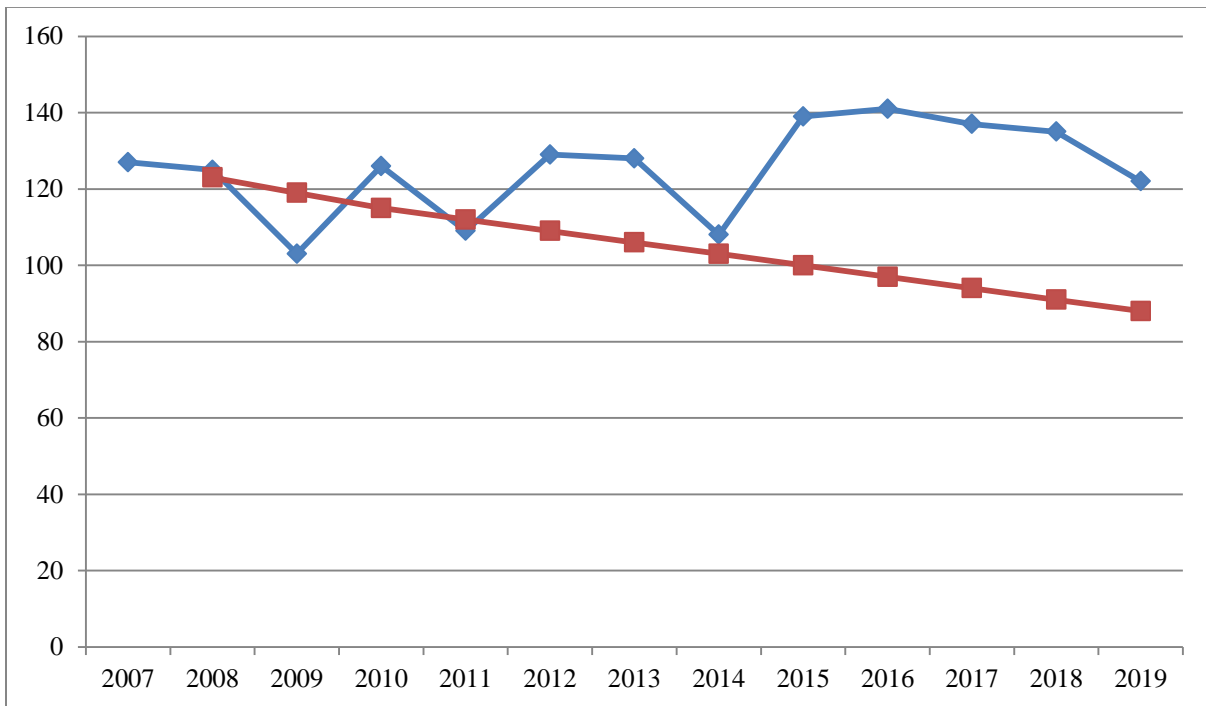
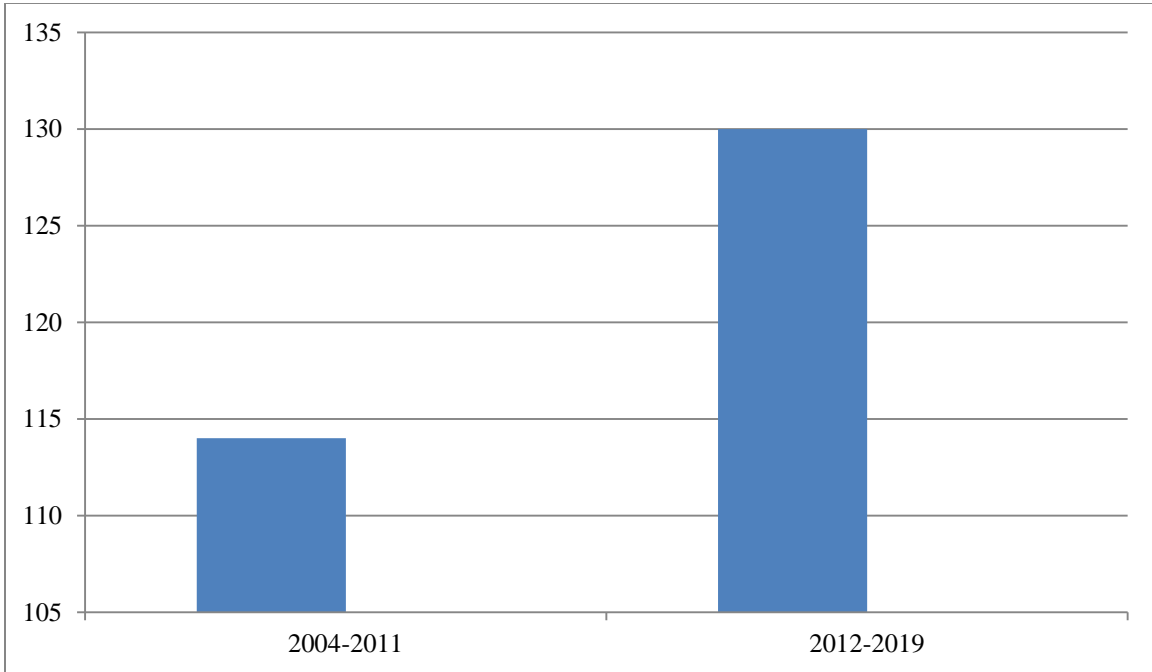


Chart # 2 highlights Michigan motorcyclist fatality numbers in the recent decade. The **blue line and diamonds displays fatalities for each year.** **A 3% reduction per year to represent theoretical progress is shown by the red line with squares.** **Michigan is not making progress as measured by a reduction in motorcyclist fatalities.**

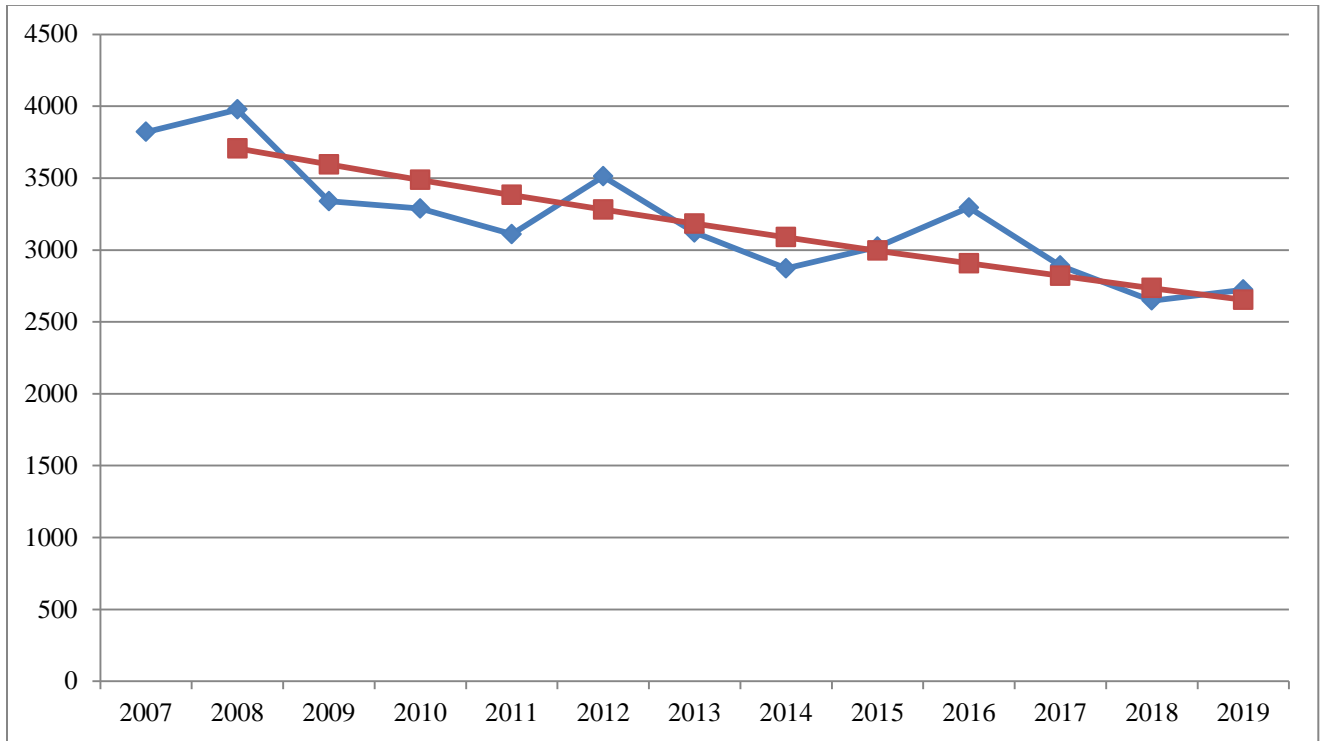
Chart # 3
Michigan Motorcyclist Average Fatalities per Year
Prior to Compared to Post Helmet Law Change



Michigan weakened its universal helmet law in April 2012 to exempt riders 21 and older who have at least \$20,000 of medical insurance coverage and have either passed a motorcycle safety course or held a motorcycle license endorsement for at least two years.

This chart displays a yearly average of 114 fatalities in the eight years prior to the law change compared to an average of 130 fatalities in the eight years post law change. **Average # of fatalities per year has increased 14.04 % in the eight years post helmet law change compared to the eight years prior.**

Chart #4
Michigan Total Motorcyclist Crashes per Year 2007-2019

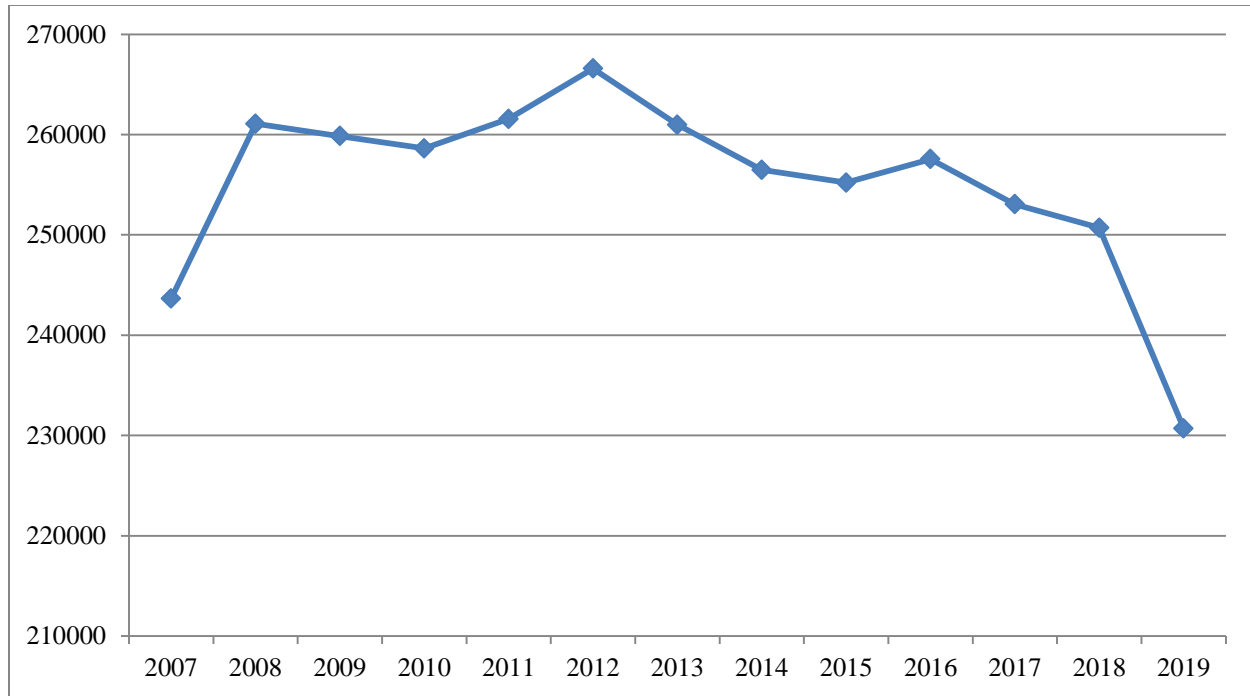


The number of motorcyclist crashes was first reported in 1966 (5,770). Highest number of crashes was 11,024 reported in 1973 - the same year as the highest number of fatalities.

A bright spot in recent Michigan motorcyclist crash statistics is the overall reduction in the number of crashes per year 2007 - 2019. **The red line represents 3% reduction each year.** There is no readily apparent reason for the decline in crashes.

The reduction in crashes has not resulted in a corresponding reduction in fatalities.

Chart 5
Michigan Motorcycle Registrations per Year 2007 - 2019

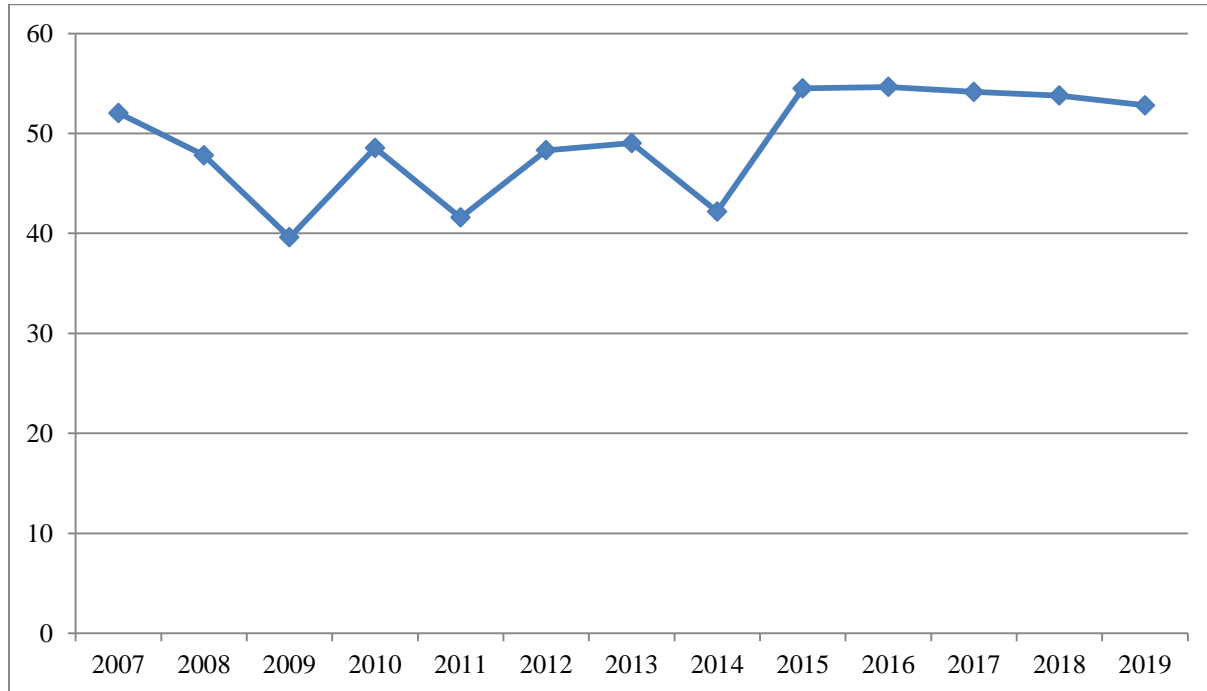


Registration data is available back to 1916. Registration numbers dipped compared to earlier years during the 1920's through about 1934, remained relatively steady until increasing significantly in 1946.

Exposure (how many motorcyclists are on the road) is often measured by the number of motorcycles registered. Measuring exposure is important because motorcyclist crashes and fatalities are impacted by the number of motorcyclist on the road. A reason advocates for weakening Michigan's helmet law stated to support their cause was that providing riders with a choice regarding wearing or not of a helmet would result in increased motorcycle sales – more individuals would choose to ride (more motorcycles would be registered) if riders were not required to wear a helmet. This chart shows the claim that changing the helmet law would result in increased motorcycle ownership, to be false. Weakening the helmet law has not resulted in an increase in registrations. Registrations have not increased.

The average number of motorcycles registered in years 2007-2011 was 256,973. The average number of motorcycles registered in years 2012-2019 is 253,910. This is a slight decrease of 1.19%.

Chart # 6 Michigan Motorcyclist Fatality Rate per 100,000 Motorcycle Registrations



The standard (historical) way to calculate fatality rate is to compare the number of fatalities to the number of registered motorcycles. The rate is typically Fatalities per 100,000 Registered Motorcycles. For example, if there are 275,000 registered motorcycles in a given year and in that same year 120 individuals are killed in motorcyclist crashes, then the fatality rate per 100,000 registered motorcycles is 43.64.

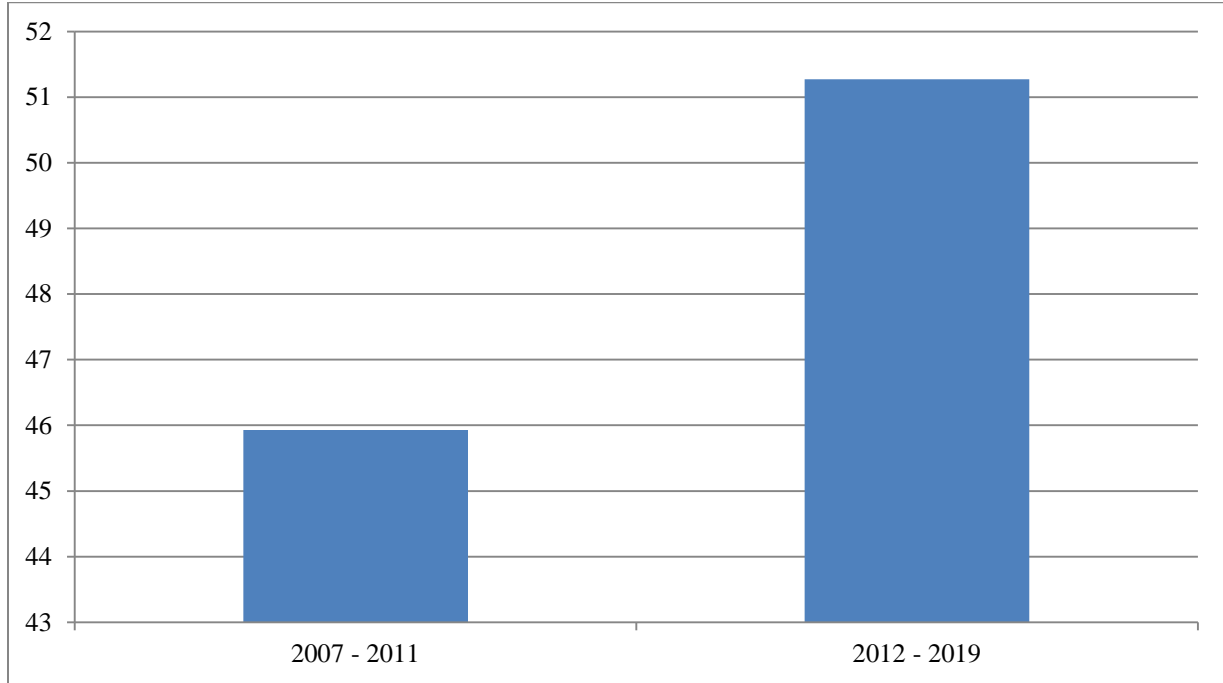
To calculate the fatality rate per 100,000 registered motorcycles, first divide the total registrations by 100,000 ($275,000 \div 100,000 = 2.75$). Second divide the number of fatalities (120) by 2.75 = 43.6 fatality rate (fatalities per 100,000 registered motorcycles).

Fatality rate per 100,000 registered motorcycles is usually considered a better measure of motorcyclist safety program effectiveness than just the raw number of fatalities because to some degree it takes into account the popularity of motorcycling.

An increase in registrations (the number of riders on the road) is often given as an acceptable reason for increased fatalities. Chart # 5 shows registrations have not increased. **This chart # 6 shows variability in fatality rate but no steady decline that would indicate progress. Increases in registrations do not account for the increase in fatalities.**

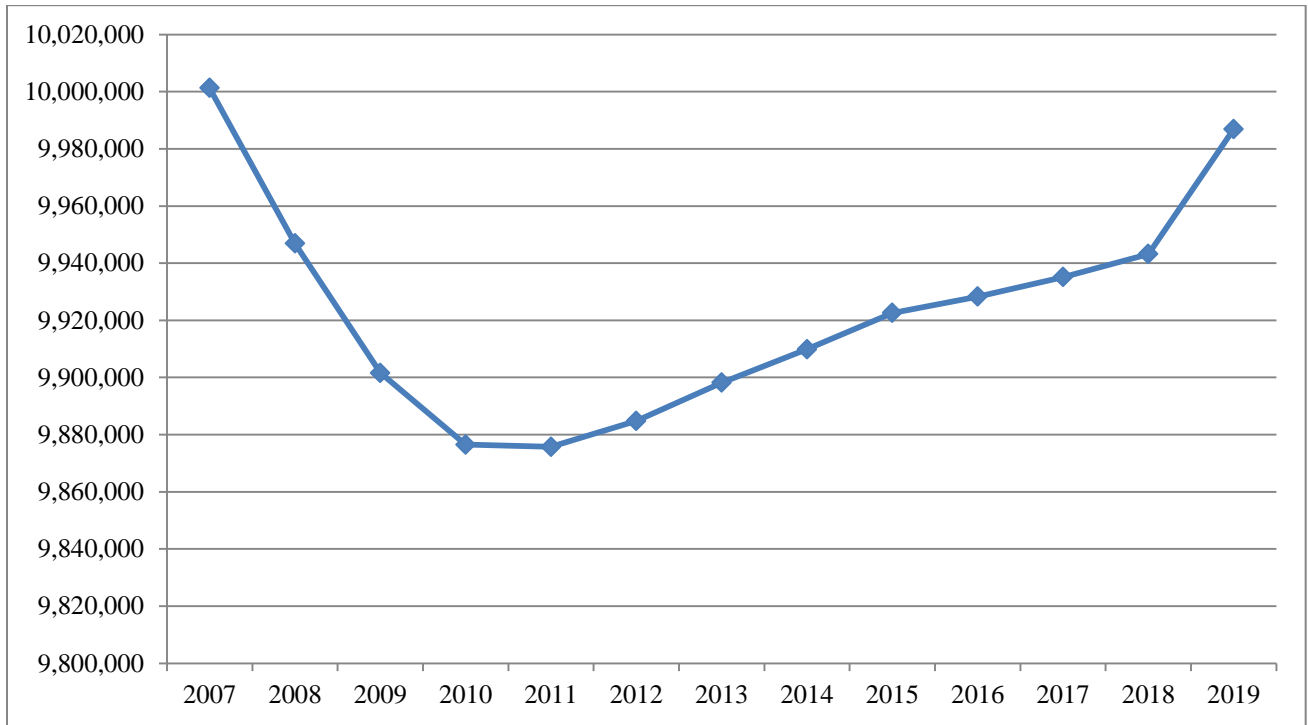
SMARTER, Aug. 2020

Chart # 7
Average Motorcyclist Fatality Rate per 100,000 registrations
Prior to and Post Helmet Law Change



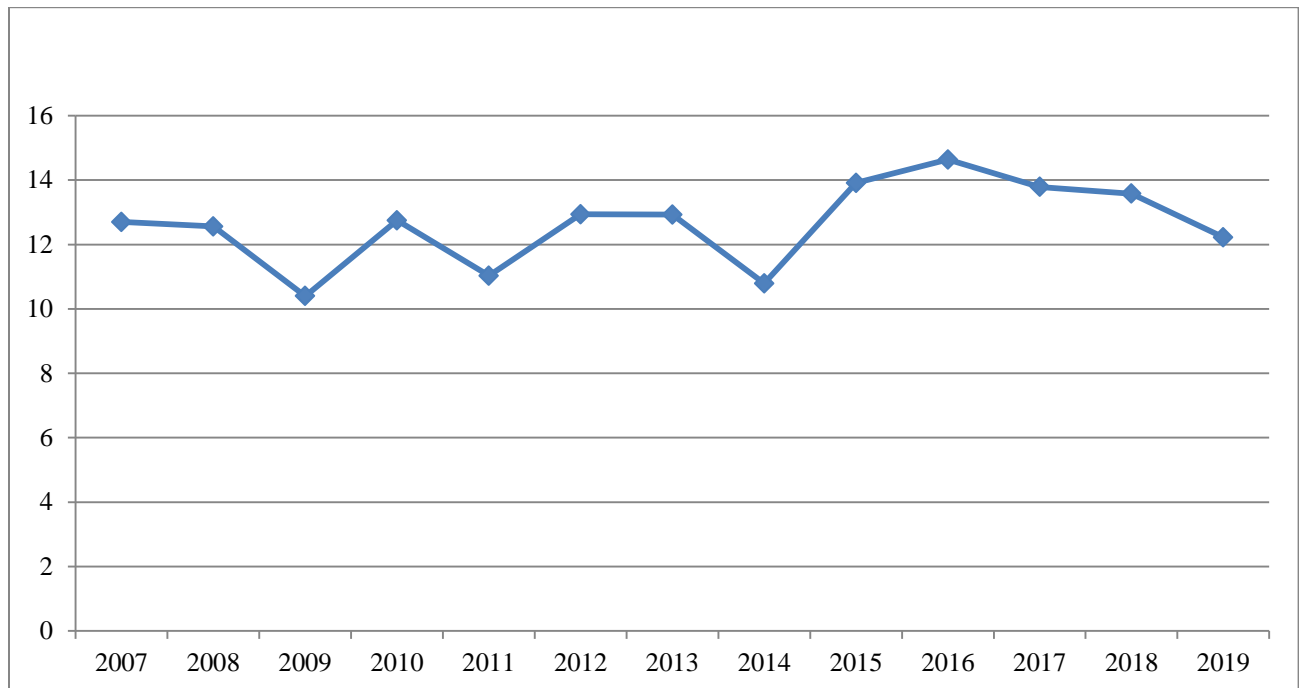
This chart shows an increase of 11.63% in Michigan motorcyclist fatality rate per 100,000 registrations comparing years prior to and after the helmet law change.

Chart # 8
Michigan Population 2007-2019



Total state population is important to consider when reviewing traffic safety measures. One possible assumption is that the number of people/vehicles on the road varies with increases and decreases in total population. This chart displays the changes in Michigan total population 2007 – 2019.

Chart # 9 Michigan Motorcyclist Fatality Rate per Million Population



The National Motorcycle Training Institute (NMCTI), a nonprofit/public benefit organization incorporated in Oregon in 2009, (www.nmcti.org) proposes an alternative to using motorcycle registrations to measure the motorcyclist fatality rate - compare motorcyclist fatalities to the general population.

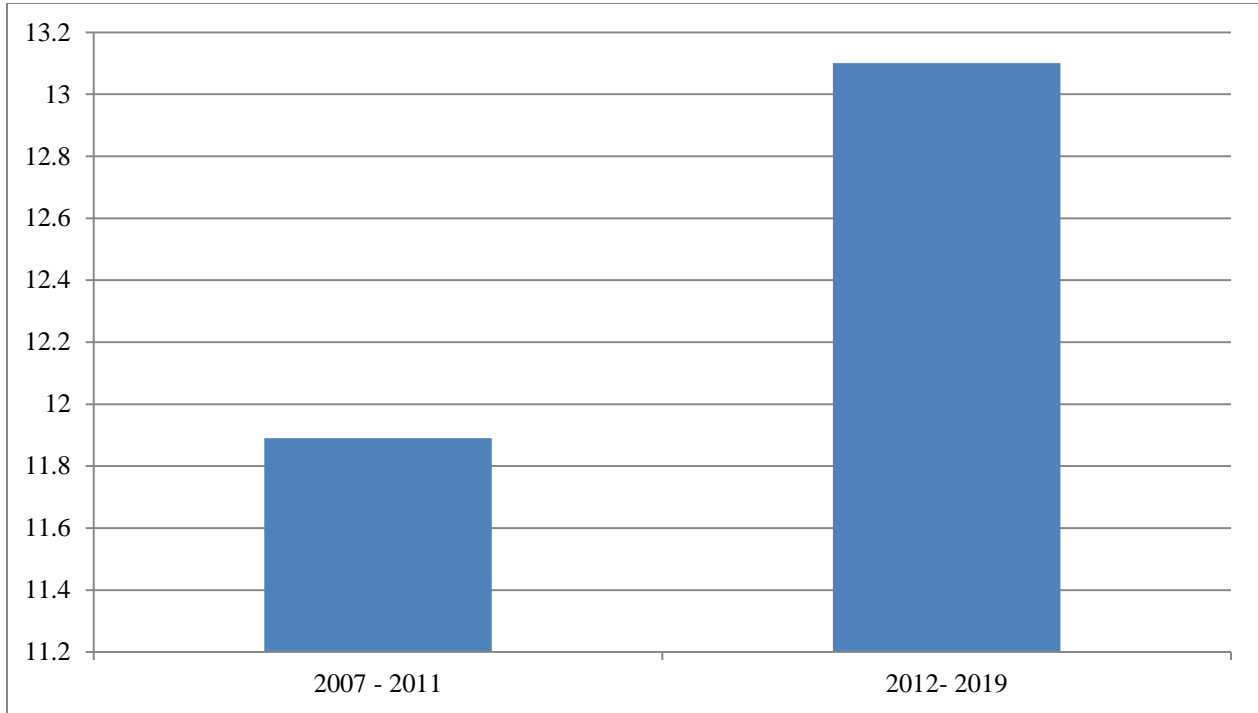
David Hough (national motorcyclist safety author and expert) says the idea of using population as the base for the motorcyclist fatality rate is to make it simple and reliable. According to Mr. Hough, this method is extremely reliable because both fatalities and population are well documented and trustworthy numbers. This rate allows a state to evaluate progress (or lack thereof) over time, allows one state to be compared to others, and allows the USA to be compared to other countries.

To compute the rate, it is typically calculated as fatalities per million population. For example, Michigan's 2019 population of 9,986,857 would be 9.986 million. Then simply divide the number of 2019 fatalities (122) by 9.986 to get the fatality rate per million population for 2019 of 12.22.

Michigan is not making progress – there is no steady decline in fatality rate per million population.

SMARTER, Aug. 2020

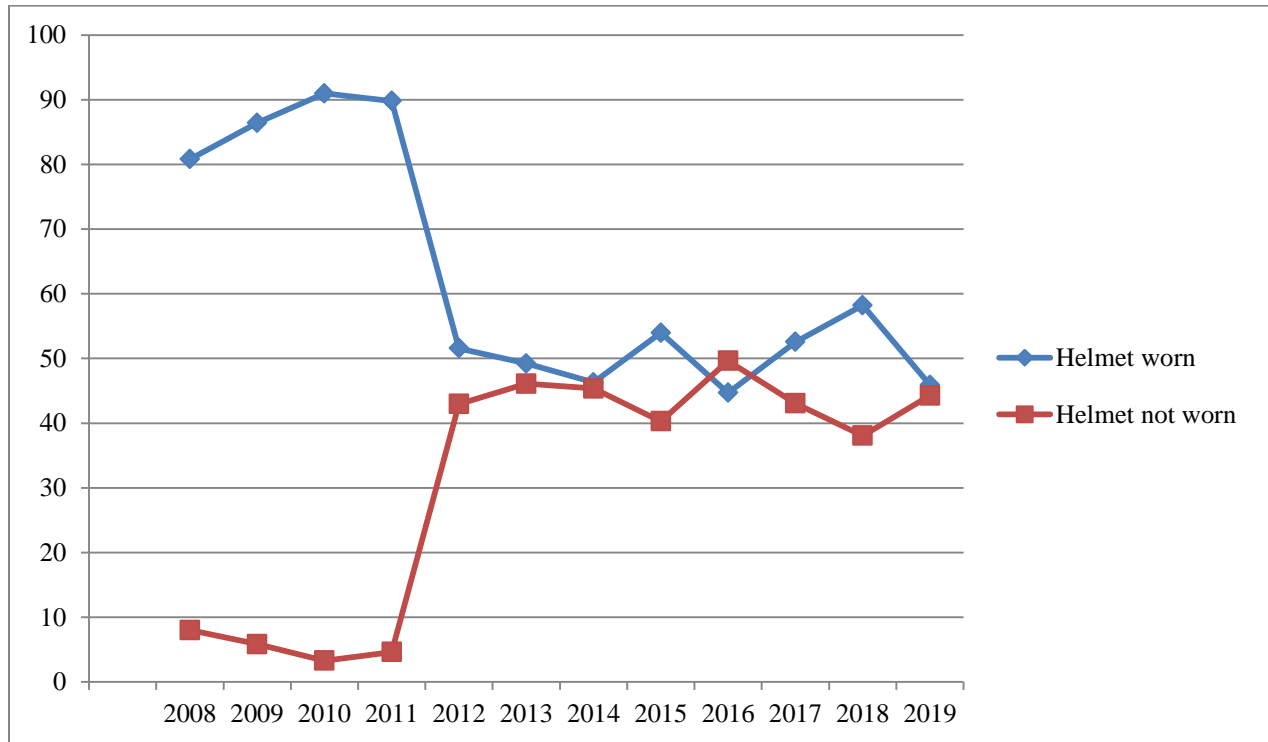
Chart # 10
Average Motorcyclist Fatality Rate per Million Population
Prior to & Post Helmet Law Change



Average yearly fatality rate per million population in the 5 years prior to the helmet law change was 11.89. Average yearly fatality rate per million population in the 7 years post helmet law change is 13.1.

This change of 1.21 fatalities per million population x an average population of 9.91 million equals an additional 12 fatalities per year. Fatality rate per million populations has increased + 10.17% post helmet law change.

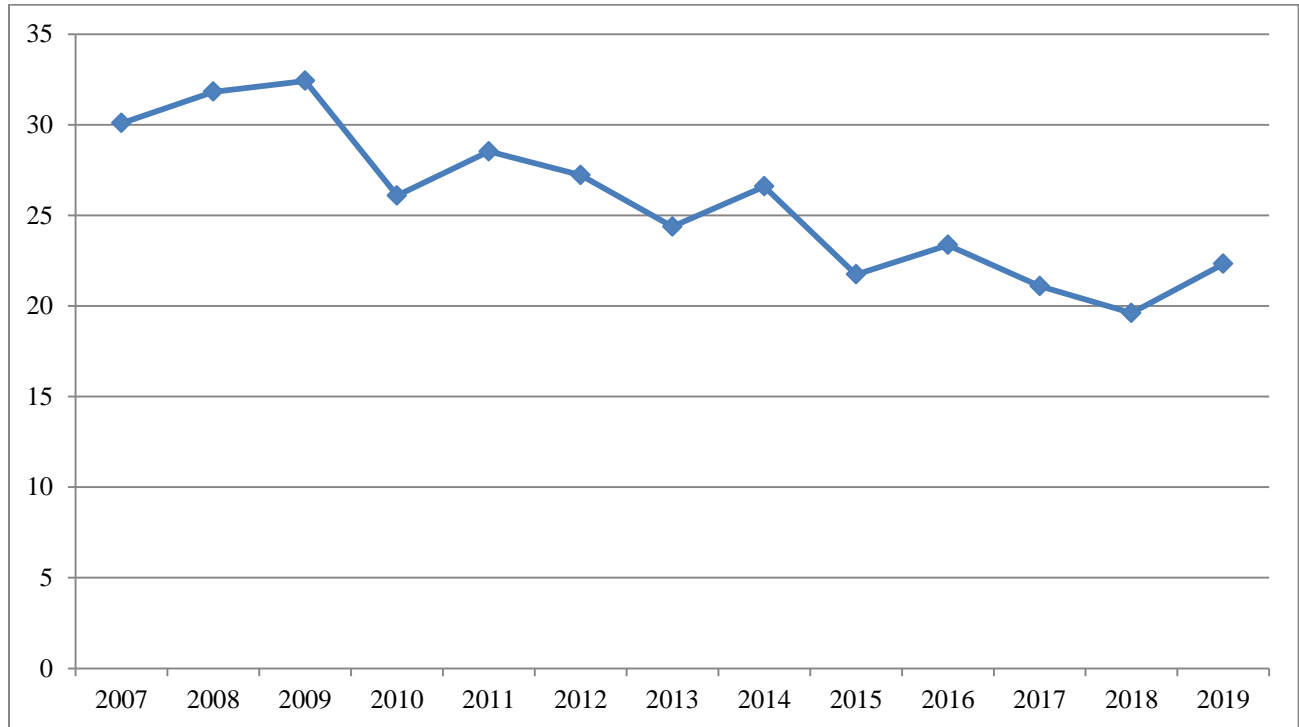
Chart # 11
Michigan Motorcyclist Helmet Use: Fatal Crashes 2008 - 2019



Michigan’s motorcycle helmet law was weakened in April of 2012. This data is consistent with research studies in other states which indicate that **when an all-rider motorcycle helmet law is in effect helmet use is 80 percent or higher and when the law is repealed or weakened helmet use drops to 50 percent or lower.**

The numbers on the chart do not total 100% as each year there is a percentage of “Helmet Use Unknown” and “Other.”

Chart #12
Michigan Crash/fatality ratio



Preventing crashes is always a main goal of a comprehensive motorcyclist safety program. This is the lone bright spot in the Michigan motorcyclist traffic safety data – see Chart #4.

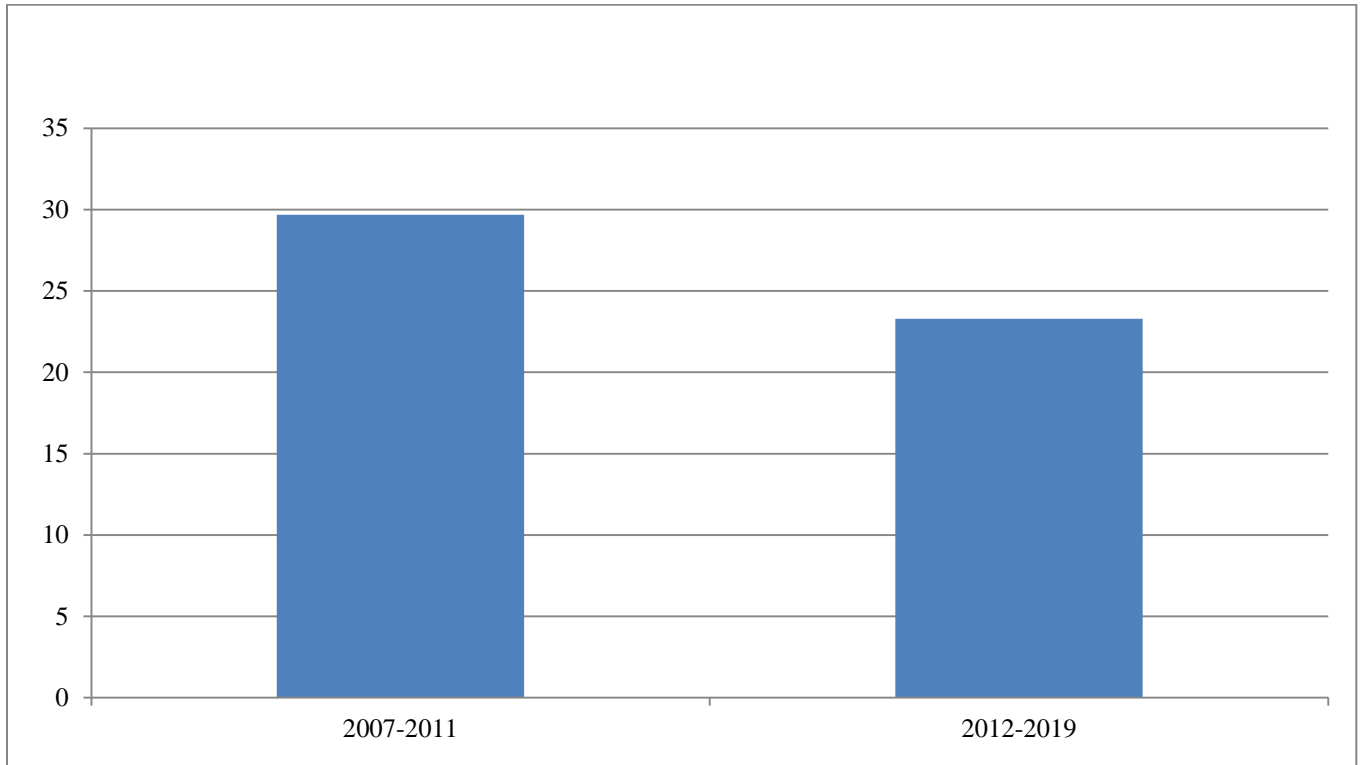
However if crashing is getting more dangerous – i.e. riders are more likely to die if they crash, then the goal of reducing the likelihood of a fatality in the event of a crash becomes even more important. Crash/fatality ratio looks at this issue.

Crash/fatality ratio is the number of crashes it takes to produce a fatality.

If this goal was being achieved, each year it would take more crashes to produce a fatality and the line on this chart would be rising left to right. The chart line on a downward trend left to right represents crashing is getting more dangerous - the situation is getting worse.

Chart #13

Crash/fatality ratio Prior to and Post Helmet Law Change

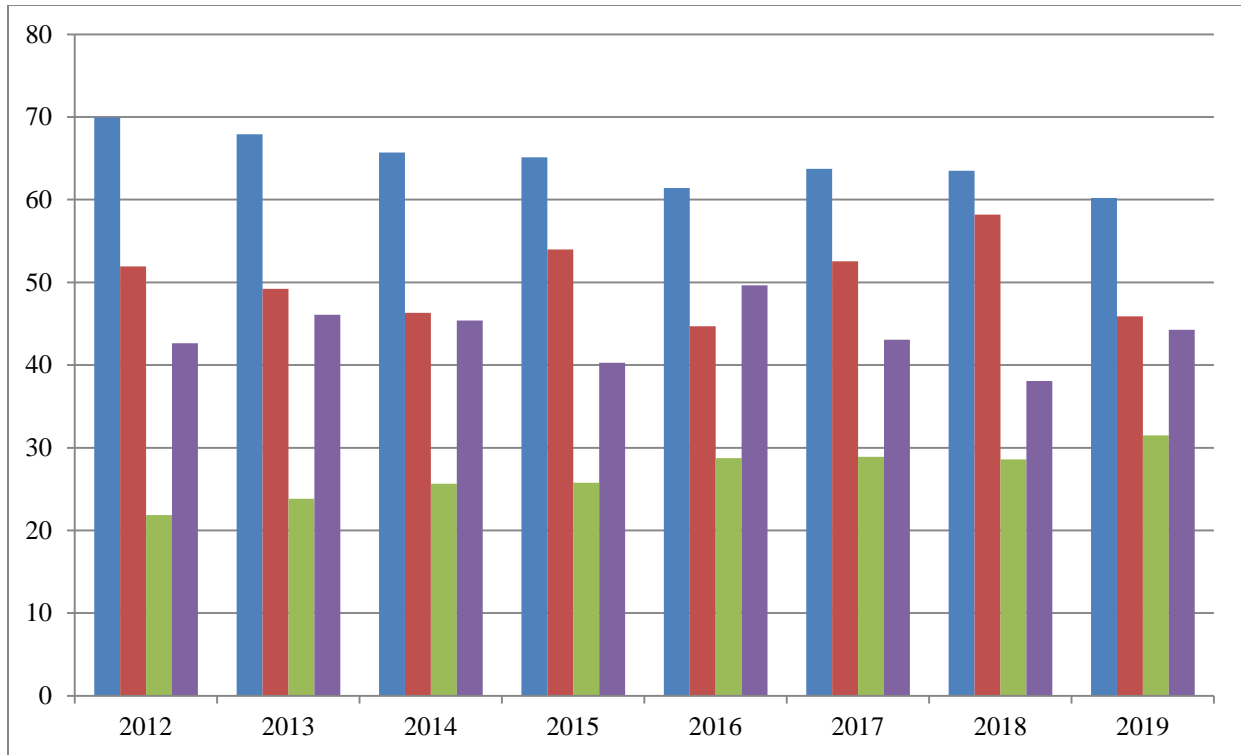


Why is the Michigan motorcyclist crash/fatality ratio going down – getting worse? Main factors correlated with fatal crashes include higher speed, striking a solid object or a vehicle, not wearing a helmet.

In the eight years since the helmet law was changed the crash/fatality ratio has decreased – it takes approximately 6.5 fewer crashes to produce a fatality following the law change.

Chart # 14

Over-under Representation in Fatalities Compared to Percent of Riders in the Crash Population - Helmet vs. No Helmet



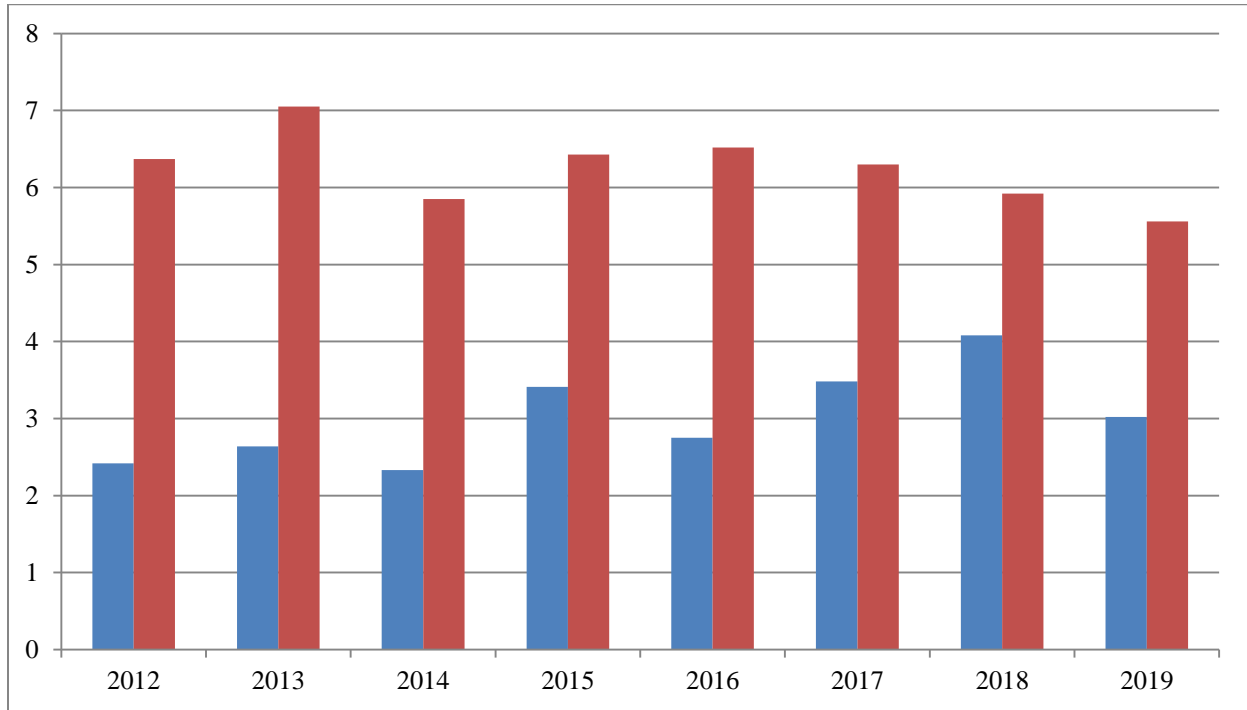
The Motorcycle Helmet Traffic Crash Statistics reported annually by the Michigan State Police Traffic Crash Reporting Unit separates motorcyclists involved in crashes into two categories – those who were wearing a helmet at the time of their crash and those who were not.

For example, in 2019 of the 3,083 motorcyclists involved in the 2,723 crashes, 1,856 or **60.20%** were wearing a helmet (**represented by the blue line**) and 971 or **30.5%** were not wearing a helmet (**represented by the green line**).

This report also provides total fatalities, fatalities for riders wearing a helmet, the percentage of riders wearing a helmet who were killed (**45.90 - represented by the dark red line**), fatalities for riders not wearing a helmet, and the percentage of riders not wearing a helmet who died in their crash (**44.26 - represented by the purple line**).

This data shows that for each year since the helmet law change in 2012 helmeted riders are under-represented in the fatality data compared to their number in the crash population and un-helmeted riders are over-represented in the fatality data compared to their number in the crash population.

Chart #15
Death Rate per 100 Crashes – Helmet vs No Helmet 2012 – 2019



Helmet worn - No helmet worn

What choice can a rider make if they want to double their chance of being killed if they are in a crash? Choose not to wear a helmet.

In each year since Michigan weakened the all-rider helmet law in 2012, the data show that un-helmeted riders who crash die at a rate approximately double that of riders who are wearing a helmet.

The National Motorcycle Institute Fatality Reporting System

SMARTER recommends the NMI Fatality Reporting System as an excellent one-stop spot for accessing USA motorcycle crash and motorcyclist fatality data: <https://motorcyclefatalities.org/>.

The National Motorcycle Institute (NMI) is a 501(c)(3) nonprofit educational think tank. NMI manages a data and statistics reporting system. NMI's goal is to provide scientifically meaningful data, statistics, and analysis while being an effective, transparent and professionally run 501(c)(3) public charity. NMI is a resource for the general public and governmental agencies, which purposefully maintains independence of the motorcycling industry.

Below are the NMI links to Michigan data.

NMI Michigan Motorcyclist Fatalities Annual Counts 1994 – 2018 can be accessed here:
<https://motorcyclefatalities.org/data/occupant/mf5/Motorcyclist.Fatalities.5yrRolling.MICHIGAN.pdf>

NMI Michigan Motorcyclist Fatalities Five Year Rolling Average 1998-2018 can be accessed here:
<https://motorcyclefatalities.org/data/occupant/mf5/Motorcyclist.Fatalities.5yrRolling.MICHIGAN.pdf>

NMI Michigan Fatal Motorcycle Crashes per Million Population Annual Count 1994 – 2018 can be accessed here:
<https://motorcyclefatalities.org/data/crash/fmca/Fatal.Motorcycle.Crashes.Annual.MICHIGAN.pdf> Also included here is a chart showing Michigan Fatal Vehicle Crashes per Million Population so a comparison between fatal motorcycle crashes and fatal vehicle crashes is displayed.

NMI Michigan Fatal Motorcycle Crashes per Million Population Five Year Rolling Average 1998-2018 and Michigan Fatal Vehicle Crashes per Million Population Five Year Rolling Average 1998-2018 are displayed here:
<https://motorcyclefatalities.org/data/crash/fmc5/Fatal.Motorcycle.Crashes.5yrRolling.MICHIGAN.pdf>